

Asemakaavassa hyväksyttävä tonttijaon muutos

Kaupunginosa 10, osalle korttelia 1, tontit 31-33

Edelliset tonttijaot hyväksytyt:
 16.8.1982, Tj 581 (10-2-1)
 16.6.2016, Tj 1255 (10-1-25)
 9.4.2018, Tj 794 Ak (10-1-27)

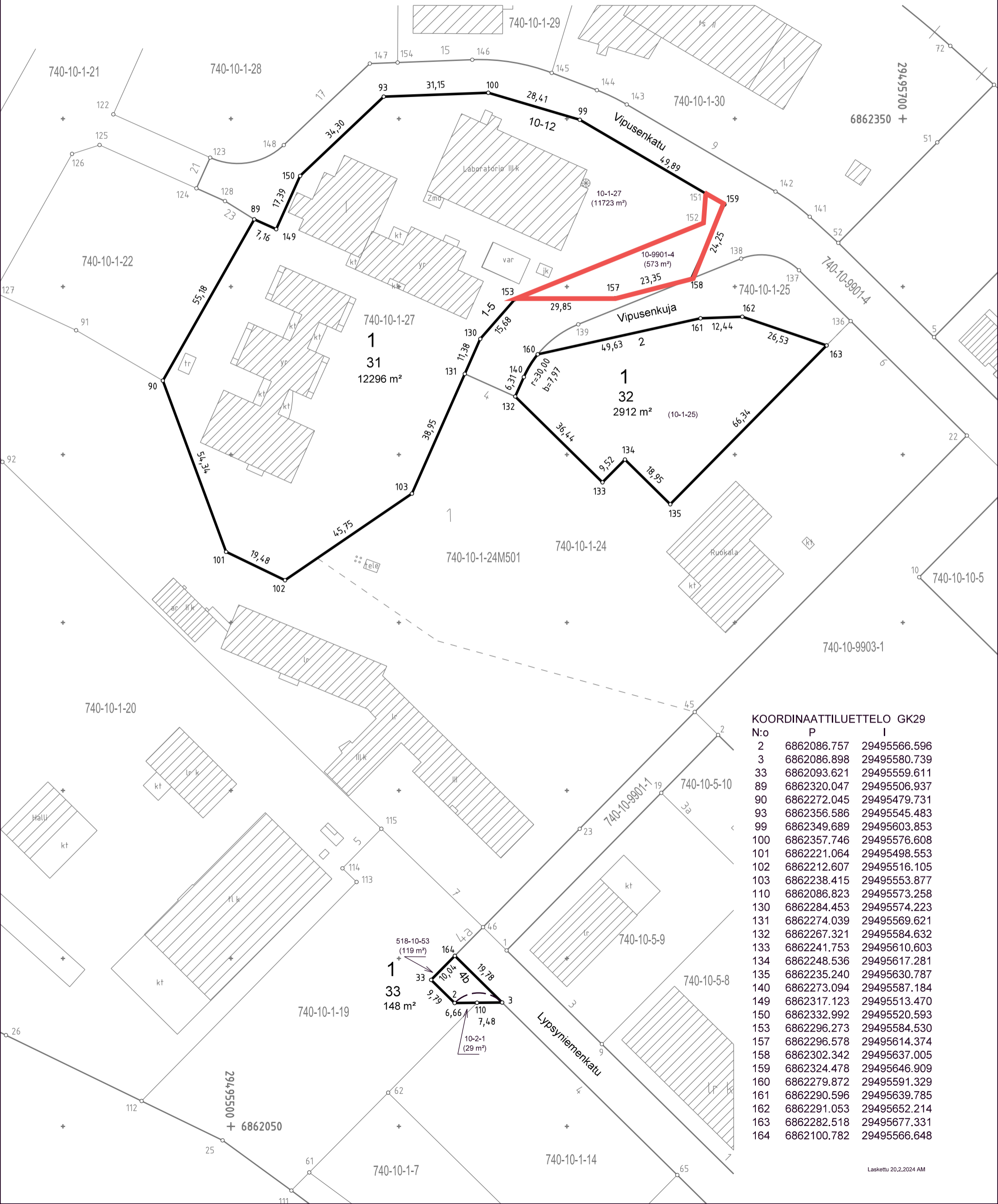
Liitekartta A

Tonttien muodostuminen

N:o	Yht. m ²	Osat m ²	Kiinteistötunnus
31	12296	11723	740-10-1-27
		573	740-10-9901-4
32	2912		740-10-1-25
33	148	119	740-518-10-53
		29	740-10-2-1

Osoite
 Vipusenkatu 10-12, Vipusenuja 1-5
 Vipusenuja 2
 Lypsyniemenkatu 4b

Mittakaava 1:1000



KOORDINAATTILUETTELO GK29

N:o	P	I
2	6862086.757	29495566.596
3	6862086.898	29495580.739
33	6862093.621	29495559.611
89	6862320.047	29495506.937
90	6862272.045	29495479.731
93	6862356.586	29495545.483
99	6862349.689	29495603.853
100	6862357.746	29495576.608
101	6862221.064	29495498.553
102	6862212.607	29495516.105
103	6862238.415	29495553.877
110	6862086.823	29495573.258
130	6862284.453	29495574.223
131	6862274.039	29495569.621
132	6862267.321	29495584.632
133	6862241.753	29495610.603
134	6862248.536	29495617.281
135	6862235.240	29495630.787
140	6862273.094	29495587.184
149	6862317.123	29495513.470
150	6862332.992	29495520.593
153	6862296.273	29495584.530
157	6862296.578	29495614.374
158	6862302.342	29495637.005
159	6862324.478	29495646.909
160	6862279.872	29495591.329
161	6862290.596	29495639.785
162	6862291.053	29495652.214
163	6862282.518	29495677.331
164	6862100.782	29495566.648